

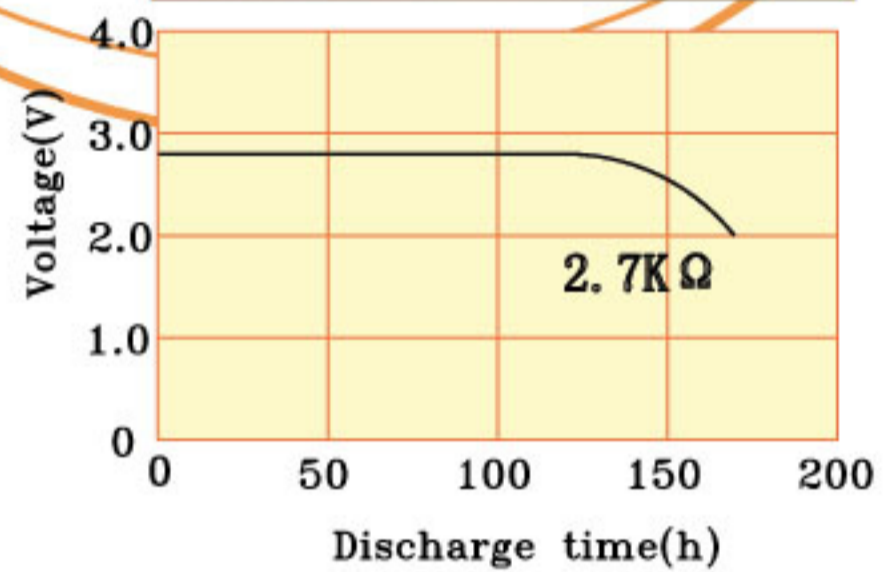
# CR-1/3N

## Lithium Manganese Dioxide Cylindrical Cell (Data Sheet)

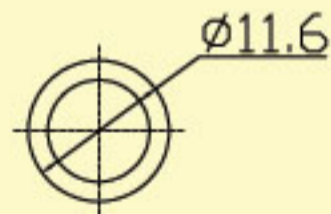
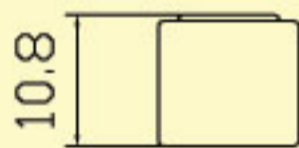
### Specifications

Nominal Voltage		3.0V
Max. Dimension	Diameter	11.6mm
	Height	10.8mm
	Apx. Weight	3.3g
Standard discharge		1mA
Standard discharge capacity		160mAh
Max. discharge current	Continue	5mA
	Pulse	80mA
Temperature Range (°C)		-30~60

### Continue discharge at 21°C



### Cell dimensions



1:1