



Zinc-Silver Oxide/Manganese Dioxide Battery

VER:

DATE:

**1.5V**

Zinc-Silver Oxide/ Manganese Coin type Battery

## **Specification**

**13mAh**

**Model: SR60**

Prepared By/Date	Checked By/Date	Approved By/Date

### **Important Notice**

These data sheets contain information specific to batteries manufactured at the time of its publication.

Content herein do not constitute a warranty.

Copyright @ Xtra-Power Battery .All rights reserved



## Zinc-Silver Oxide/Manganese Dioxide Battery

VER:

DATE:

### PRODUCT SPECIFICATION


- 1. Applicability:** This specification is applicable to **SR60** coin type zinc-silver oxide/manganese dioxide battery.

### **SPECIFICATION**

**1. Cross Reference :**

IEC	JAPAN	Ray-O-Vac	U.S.A SWITZERLAND	GERMANY	H.K PRODUCTS
SR60	SR621W	RW320	364	V364	SG1

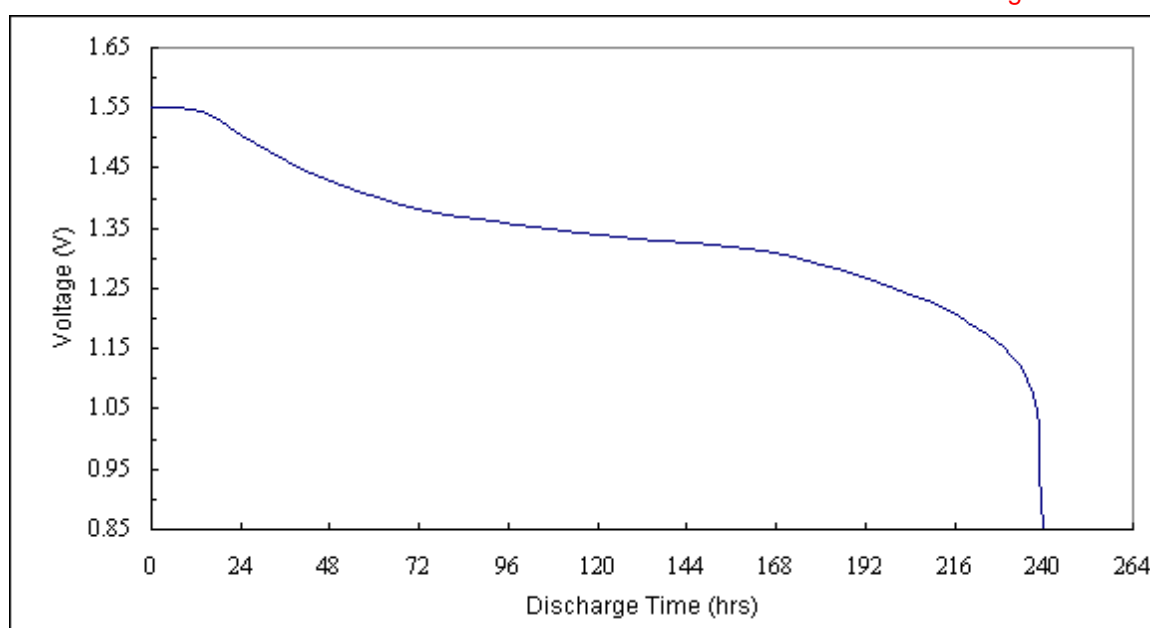
- 2. Chemical System :** Zinc-Manganese Dioxide ( Potassium Hydroxide Electrolyte )
- 3. Nominal Voltage :** 1.55V  
13mAh ( continuously discharge at 20±2°C under 22k $\Omega$  load
- 4. Standard Capacity :** to 0.9V end-point voltage )
- 5. Approximate Weight :** 0.28g
- 6. Dimensions & Structure :** Dimensions & structure of the cell are shown in the attached Fig. 1.
- 7. Terminal Materials :** Negative : Ni plated/Fe/Cu plated or gold plated steel  
Positive : Ni plated steel

				VER:
		Zinc-Silver Oxide/Manganese Dioxide Battery		DATE:

## 9. Discharge Curve :

Load Resistance : 22k  $\Omega$

End-Point Voltage: 0.9V



## 10. Markings on Product :

- (1) Battery Type : SR621
- (2) Brand :
- (3) Polarity : "+" at the bottom ( "--" not indicated )
- (4) Other specified markings

## 11. Caution for Use :

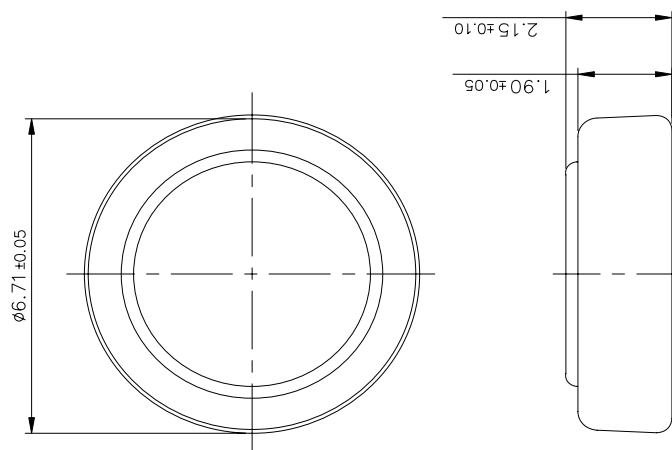
- (1) Since the button cell is not manufactured for recharging, there are risks of electrolyte leakage or causing damage to the device if the cell is charged.
- (2) The button cell shall be installed with its "+" and "--" sign according to the instruction shown on the applied device.
- (3) Short-circuiting, heating, disposing of in fire, or disassembling the button cell shall be prohibited.

## 12. Warranty :

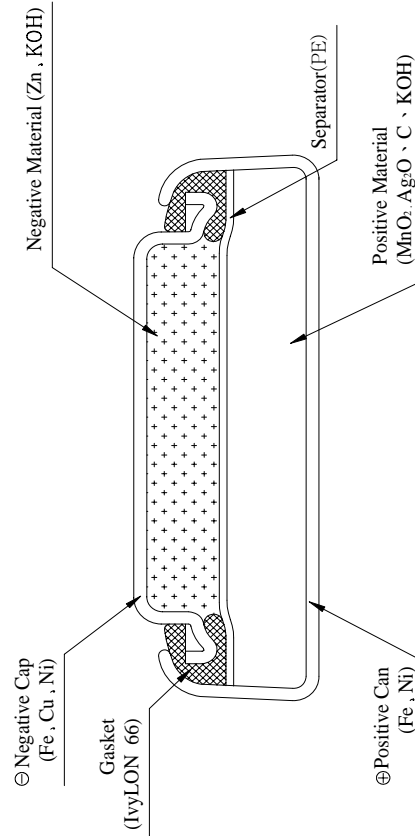
12 months shelf life after delivery.

## SR621 DIMENSIONS & STRUCTURE

Dimensions ( in mm ) :



Structure :



**Fig. 1**