



銀中國際電池技 27A

TECHNICAL SPECIFICATION FOR ALKALINE MANGANESE BATTERY

PREPARED BY:

APPROVED BY:

DATE: January 3, 2006

SPEC.NO.: REF----R27----0102

ADD: Room1104 ,Kingsford Industrial Centre,13 Wang Hoi Road, Kowloon Bay,
Kowloon, Hong Kong.

Tel: (852) 22433399 Fax: (852) 23059889

E-mail: sales@xtra-power.com.hk

(Manufacturer reserves the right to alter or amend the design, model and specification without prior notice.)

1. Other name for the same type

L828 27A

2. Chemical System

Alkaline Zinc—Manganese battery (+) Zn | KOH | MnO₂ (-)

3. Nominal Voltage: 12.00V

4. Average Weight: 4.63g

5. Nominal Capacity: 21mAh

(continuous discharge at 20±2°C under 0.05mA discharge current to 7.20V voltage)

6. Appearance: Metal Can

7. Electrical Characteristics:

7.1 Off—load Voltage:

New Battery ≥ 12.10V

After 12 Months (Room Temp.) ≥ 12.00V

7.2 Discharge Time (continuous discharge at 20±2°C under 20K Ω discharge load to 7.2V voltage)

New Battery ≥ 35 hours

After 12 Months (Room Temp.) ≥ 31 hours

7.3 Over—discharge Characteristic

Condition: 20K Ω continuous discharge at 20±2°C & 65±20% R.H.

Period: 48 hours

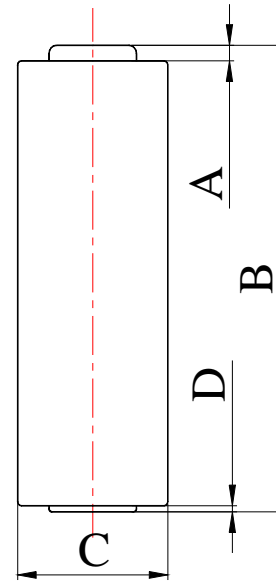
Characteristic: No deformation is over 0.20mm of the nominal dimension, and no visual electrolyte leakage

8. Dimensions:

Nominal Dimension: $\varnothing 8.00 \times 28.80$

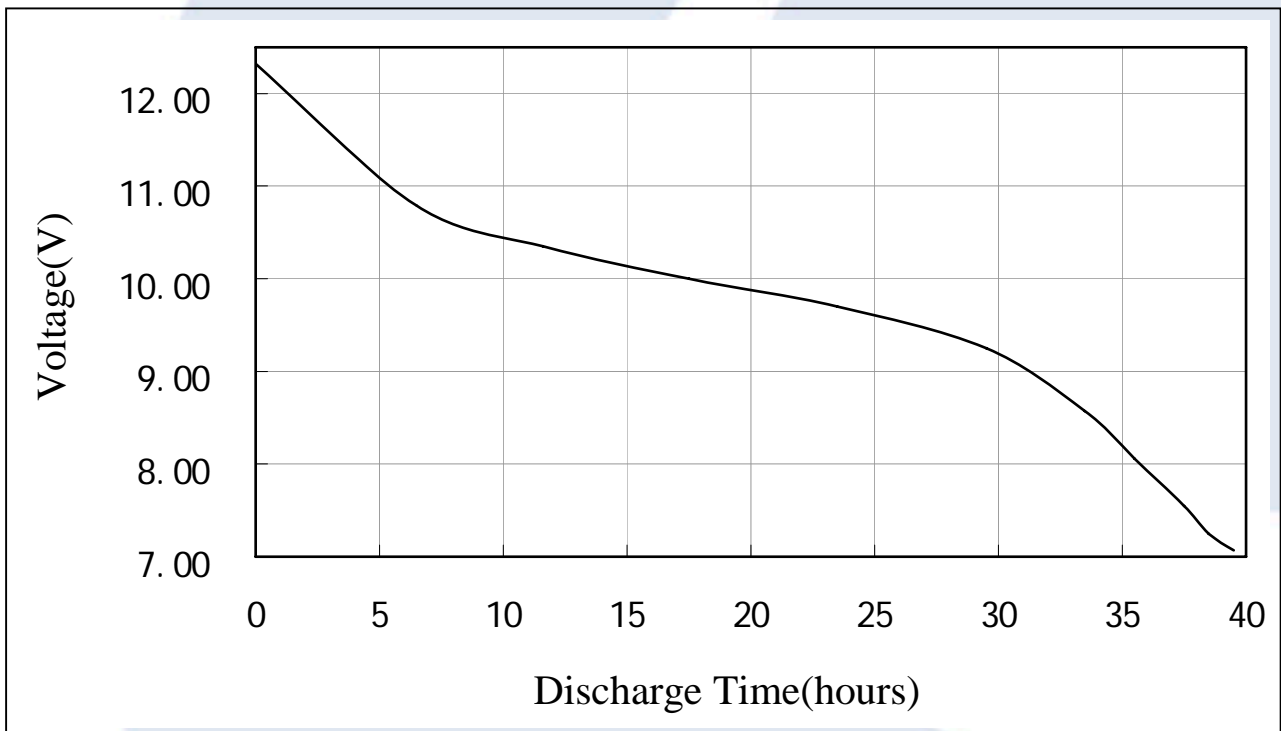
(Unit: mm)

Dimension	Range
A(ref.)	0.60
B	28.00 ± 0.30
C	7.75 ± 0.10
D(ref.)	0.10



9. Typical Discharge Characteristics

(continuous discharge at $20 \pm 2^\circ\text{C}$ under $20\text{K}\Omega$ discharge load to 7.20V voltage)



10. Mark:

The following message will be printed or stamped on the body of the battery:

10.1 Designation: 27A、 L828.

10.2 Manufacturer's name: Strongwill Ultra-Power Battery Technology

10.3 Trademark: Neutral or Xtra-Power

10.4 Nominal Voltage: 12V.

10.5: Pole: “+” and “-”.

10.6 Warning: May explode or leak if charged or disposed of in fire.

11. Caution for use :

11.1 There are risks of electrolyte leakage or causing damage to the device if the battery is charged;

11.2 The battery shall be installed with “+”and “-” in correct position;

11.3 Short-circuiting and heating the battery、 disposing of the can must not be permitted.

—————END—————